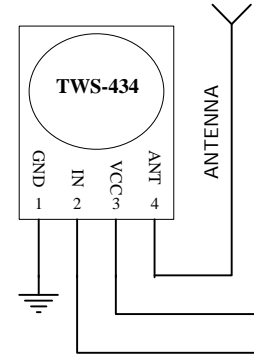
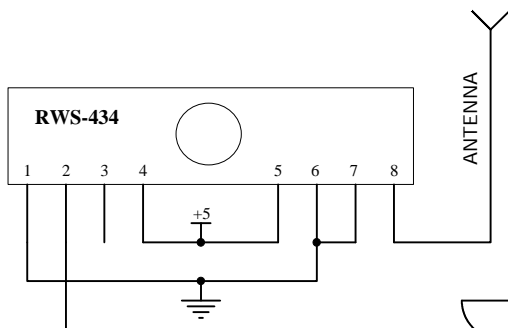
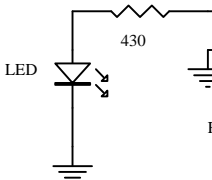


NOTE: THE RWS-434 RECEIVER REQUIRES A REGULATED 5 VDC POWER SUPPLY



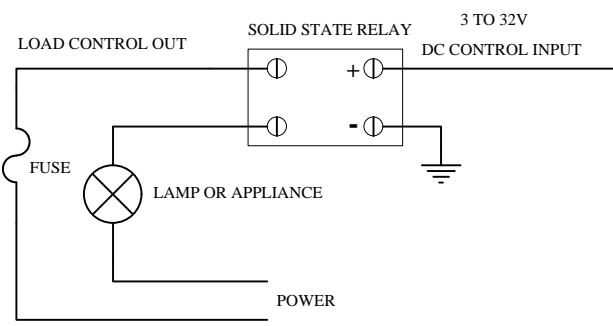
WILL OPERATE FROM 3.0 TO 5.5 VOLTS DC

SAMPLE DRIVE CIRCUIT FOR DIRECT CONTROL OF LED

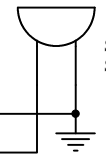


R-8PD IS MARKED WITH A SILVER DOT

SAMPLE SOLID STATE RELAY DRIVE CIRCUIT



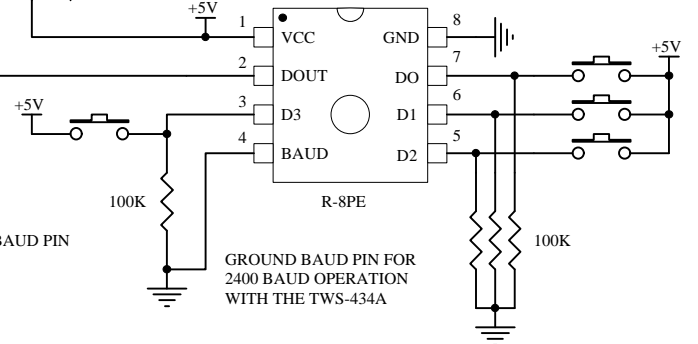
SAMPLE BUZZER DRIVE CIRCUIT
SMALL DC BUZZER (25mA MAX)



DATA RATE SELECTION WITH BAUD PIN

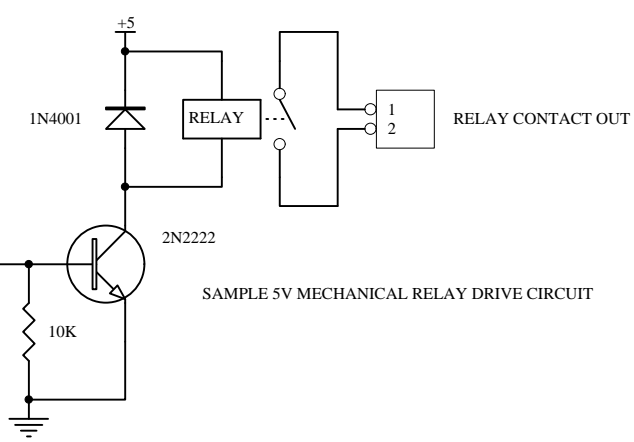
0 = 2400 bps
1 = 4800 bps

R-SPE IS MARKED WITH A GOLD DOT



GROUND BAUD PIN FOR 2400 BAUD OPERATION WITH THE TWS-434A

USE 100K TO 200K PULL-DOWN RESISTORS FOR LOWER POWER CONSUMPTION ON BUTTON PRESS



SAMPLE 5V MECHANICAL RELAY DRIVE CIRCUIT

<http://www.rentron.com>

Title			EXAMPLE CIRCUITS USING THE R-SPE/R-8PD ENCODER/DECODER IC'S WITH TWS-434A / RWS-434
Size	Number	Revision	
Orcad A		1.0	
Date:	30-Nov-2006	Sheet of	
File:	C:\CAD\SCHEMATICS.Ddb	Drawn By: B. REYNOLDS	